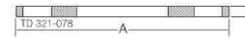
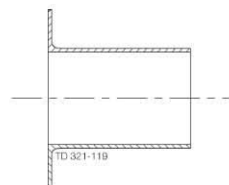
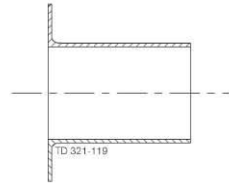


Item No.	PPL USD	Item No.	PPL USD	Size		Dimension			
						A		B	
				inch	mm	inch	mm	inch	mm
<b>304</b>		<b>316L</b>							
<b>Product Code: 5086</b>									
<b>14VB-A Lap Joint Stub End - #1</b>									
**		9634052714		½	12.7	2.00	50.8	1.69	42.9
**		9634052717		¾	19.0	2.00	50.8	1.69	42.9
9634052720		9634052721		1	25.4	2.00	50.8	2.00	50.8
9634052724		9634052725		1½	38.1	2.00	50.8	2.88	73.2
9634052728		9634052729		2	50.8	2.50	63.5	3.63	92.2
9634052732		9634052733		2½	63.5	2.50	63.5	4.13	104.9
9634052736		9634052737		3	76.2	2.50	63.5	5.00	127.0
9634052740		9634052741		4	101.6	2.50	63.5	6.19	157.2
*		*		6	152.4	3.50	88.9	8.63	219.2
<b>14VB-A Lap Joint Stub End</b>									
9634052715		9634052716		½	12.7	2.00	50.8	1.69	42.9
9634052718		9634052719		¾	19.0	2.00	50.8	1.69	42.9
9634052722		9634052723		1	25.4	2.00	50.8	2.00	50.8
9634052726		9634052727		1½	38.1	2.00	50.8	2.88	73.2
9634052730		9634052731		2	50.8	2.50	63.5	3.63	92.2
9634052734		Contact AL		2½	63.5	2.50	63.5	4.13	104.9
9634052738		9634052739		3	76.2	2.50	63.5	5.00	127.0
9634052742		9634052743		4	101.6	2.50	63.5	6.19	157.2
9634052746		9634052747		6	152.4	3.50	88.9	8.63	219.2
<b>304</b>		<b>Carbon Steel</b>							
<b>Product Code: 5086</b>									
<b>38SL Slip-on Flange - #1</b>									
9634048220		**		½	12.7	3.50	88.9	0.38	9.7
060398		**		¾	19.0	3.87	98.3	0.38	9.7
060400		060401		1	25.4	4.25	108.0	0.38	9.5
060402		060403		1½	38.1	5.00	127.0	0.38	9.5
060404		060405		2	50.8	6.00	152.4	0.44	11.1
060406		060407		2½	63.5	7.00	177.8	0.44	11.1
060408		060409		3	76.2	7.50	190.5	0.50	12.7
060410		060411		4	101.6	9.00	228.6	0.50	12.7
060413		**		6	152.4	11.00	279.4	0.56	14.3



\* = Please contact your Alfa Laval contact person for further information.

\*\* Not available

1.5

Item No.	PPL USD	Item No.	PPL USD	Size		Dimension					
						A		B			
<b>SFY - Fluoroelastomer</b>		<b>U - Buna N</b>		inch	mm	inch	mm	inch	mm	<b>A24FCF Hinged Pipe Hanger</b>	
010379		010148		1	25.4	4.00	101.6	1.00	25.4		
010380		011539		1½	38.1	4.00	101.6	1.50	38.1		
010381		013195		2	50.8	4.00	101.6	2.00	50.8		
010403		013502		2½	63.5	4.56	115.9	2.50	63.5		
010383		014559		3	76.2	4.56	115.9	3.00	76.2		
010384		015612		4	101.6	5.69	144.5	4.00	101.6		
**		010168		6	152.4	7.59	192.8	6.00	152.4		
<b>B24FCF Two Piece Pipe Hanger</b>											
010376		010370		½	12.7	2½	54.0	3⅝	92.1		
010378		010375		¾	19.0	2½	54.0	3⅝	92.1		
010385		010248		1	25.4	2½	54.0	3⅝	92.1		
010390		010252		1½	38.1	2½	54.0	3⅝	92.1		
010393		010256		2	50.8	2⅝	66.7	4 5/16	109.5		
010396		010260		2½	63.5	3⅝	79.4	4 7/8	123.8		
010398		010264		3	76.2	3⅝	92.1	5 3/8	136.5		
010401		010266		4	101.6	4¾	120.7	6 9/16	166.7		
<b>C24FCF Two-Piece Pipe Hanger with Threaded Connector</b>											
010004		010002		½	12.7	2½	54.0	3⅝	92.1		
010008		010025		¾	19.0	2½	54.0	3⅝	92.1		
010005		010249		1	25.4	2½	54.0	3⅝	92.1		
010006		010253		1½	38.1	2½	54.0	3⅝	92.1		
010015		010259		2	50.8	2⅝	66.7	4 5/16	109.5		
010010		010262		2½	63.5	3⅝	79.4	4 7/8	123.8		
010040		010265		3	76.2	3⅝	92.1	5 3/8	136.5		
010044		010269		4	101.6	4¾	120.7	6 9/16	166.7		

Item No.	PPL USD	Size		Dimension				
				A		B		
304		inch	mm	inch	mm	inch	mm	
<b>Product Code: 5082</b>								<b>D24FCF PVC Pipe Hanger</b>
88123701		1	25.4	1.06	27.0	2.81	71.4	
88122672		1½	38.1	1.06	27.0	2.81	71.4	
88122673		2	50.8	1.31	33.3	3.56	90.5	
88122674		2½	63.5	1.56	39.7	3.94	100.0	
88122675		3	76.2	1.81	46.0	4.56	115.9	
88122676		4	101.6	2.31	58.7	5.56	141.3	
<b>Product Code: 5082</b>								<b>E24FCF PVC Pipe Hanger with Threaded Connection</b>
88123676		1	25.4	1.06	27.0	2.81	71.4	
88123929		1½	38.1	1.06	27.0	2.81	71.4	
88122541		2	50.8	1.31	33.3	3.56	90.5	
88122542		2½	63.5	1.56	39.7	3.94	100.0	
88122543		3	76.2	1.81	46.0	4.56	115.9	
88122544		4	101.6	2.31	58.7	5.56	141.3	
<b>Product Code: 5086</b>								<b>29 Wall Plate</b>
881514		1	25.4	5.00	127.0			
881515		1½	38.1	5.00	127.0			
881516		2	50.8	5.00	127.0			
8815170		2½	63.5	5.00	127.0			
8815180		3	76.2	6.00	152.4			
8815190		4	101.6	7.00	177.8			



1.5

Item No.	PPL USD	Size		Dimension						
				A		B		C		
AI (Aluminum)		inch	mm	inch	mm	inch	mm	inch	mm	
<b>25H Wrench for Bevel Seat Nut, Single End</b>										
285025		1	25.4	1.86	47.2	11.00	279.4			
285026		1½	38.1	2.47	62.7	12.75	323.9			
285027		2	50.8	3.06	77.8	15.00	381.0			
285028		2½	63.5	3.66	92.9	17.50	444.5			
285029		3	76.2	4.25	108.0	21.00	533.4			
285031		4	101.6	5.48	139.3	23.25	590.6			
<b>H25H Wrench for Bevel Seat Nut, Single End Short Handle</b>										
285090		1	25.4	1.86	47.2	6.88	174.8			
285091		1½	38.1	2.47	62.7	8.5	215.9			
285093		2	50.8	3.06	77.7	9.00	228.6			
285094		2½	63.5	4.25	108.0	9.94	252.5			
285096		3	76.2	-	-	11.12	282.4			
<b>25HA Wrench for Bevel Seat Nut, Double End</b>										
285036		1½ x 1	38.1 x 25.4	1.86	47.2	2.47	62.7	12.38	315.5	
285038		2 x 1½	50.8 x 38.1	2.47	62.7	3.06	77.8	14.00	355.6	
285039		2½ x 2	63.5 x 50.8	3.06	77.8	3.66	92.9	18.00	457.2	
<b>H25HA Wrench for Bevel Seat Nut, Double End Short Handle</b>										
285097		2 x 1½	50.8 x 38.1	2.47	60.5	3.06	77.7	11.81	300.0	

Saw Vice*	PPL USD	Expanding	PPL USD	Expanders**	PPL USD	Size		
		Block		Item No.		in	mm	
Item No.		Item No.		Item No.				
<b>Tube OD Hygenic and Industrial (Individual Tool Price)</b>								
283526		284377		283567		1	25.4	
283528		284378		283568		1½	38.1	
283529		284379		283569		2	50.8	
283530		284380		283570		2½	63.5	
283531		284381		283571		3	76.2	
283532		284382		283572		4	101.6	

\*\* = Tools also used for bevel seat.

Item No.	PPL USD	Size		
		in	mm	
<b>Additional Tools for Bevel Seat</b>				
284185		1 & 1½	25.4 & 38.1	
284187		1½ - 3	38.1 - 76.2	
284188		4	101.6	

\* = Please contact your Alfa Laval contact person for further information.

