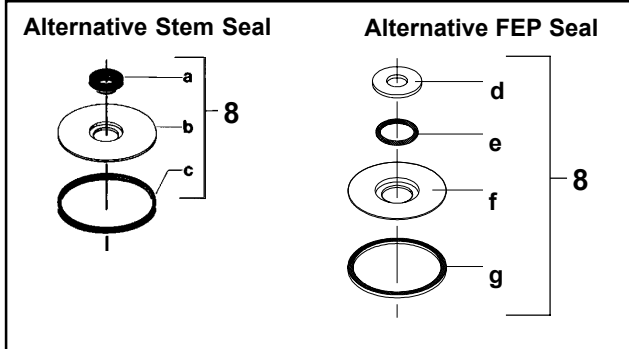
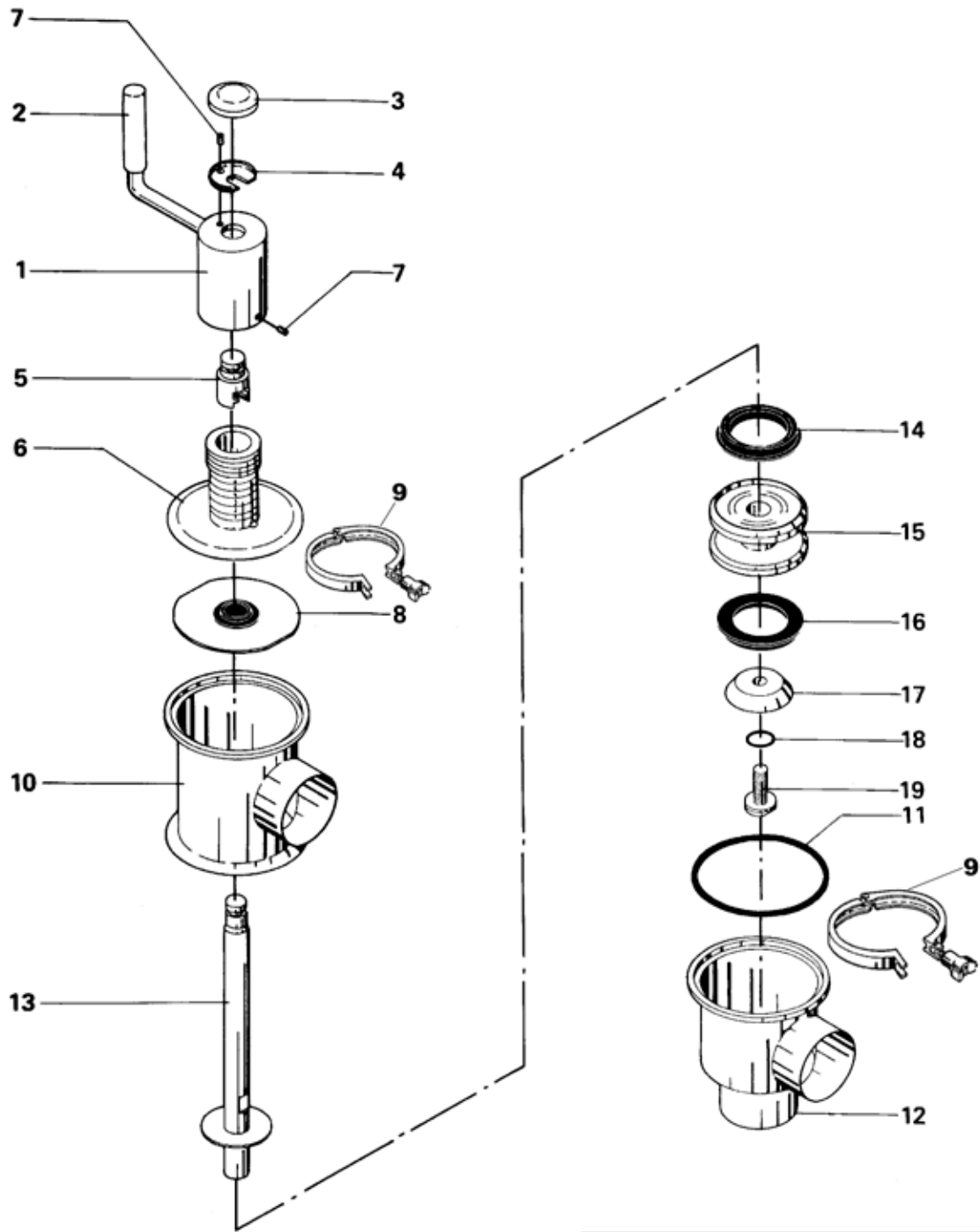


# Alfa Laval



# Sanitary Manually Operated Valve SMO Divert Valve

## Operating Mechanism

Pos.	Qty.	Description	1.5-inch Part No.	2-inch Part No.	2.5-inch Part No.	3-inch Part No.	4-inch Part No.
	1	Crank mechanism complete, polished.....	884-28286	884-28286	884-28286	884-28287	884-28287
	1	Crank mechanism complete, industrial ...	31353-0530-1	31353-0530-1	31353-0530-1	31353-0530-2	31353-0530-2
1	1	Crank .....	31353-0462-1	31353-0462-1	31353-0462-1	31353-0462-1	31353-0462-1
2	1	Handle (Included in pos. 1) .....	31353-0495-1	31353-0495-1	31353-0495-1	31353-0495-1	31353-0495-1
3	1	Cap .....	31353-0468-1	31353-0468-1	31353-0468-1	31353-0468-1	31353-0468-1
4	1	Washer .....	31353-0467-1	31353-0467-1	31353-0467-1	31353-0467-1	31353-0467-1
5	1	Stem holder .....	31353-0466-1	31353-0466-1	31353-0466-1	31353-0466-1	31353-0466-1
6	1	Guide .....	31353-0459-1	31353-0459-1	31353-0459-1	31353-0460-1	31353-0460-1
7	2	Set screw .....	221581-92	221581-92	221581-92	221581-92	221581-92

## Valve Parts

Pos.	Qty.	Description	1.5-inch Part No.	2-inch Part No.	2.5-inch Part No.	3-inch Part No.	4-inch Part No.
<b>Stem Seal</b>							
8Δ	1	Lip seal, EPDM (standard) .....	31353-0155-1	31353-0155-1	31353-0155-1	31353-0188-1	31353-0188-1
	1	Lip seal, NBR .....	31353-0155-2	31353-0155-2	31353-0155-2	31353-0188-2	31353-0188-2
	1	Lip seal, FPM .....	31353-0155-3	31353-0155-3	31353-0155-3	31353-0188-3	31353-0188-3
<b>Clamp</b>							
9	1	Heavy duty clamp .....	9612-0112-04	9612-0112-04	9612-0112-04	9612-0112-05	9612-0112-05
<b>Valve Body (industrial)</b>							
10	1	Valve body, upper, 1 port GC .....	884-253250	31353-0070-7	884-25264	31353-0064-7	884-26876
	1	Valve body, upper, 1 port W .....	31353-0053-1	31353-0054-1	31353-0055-1	31353-0056-1	31353-0058-1
	1	Valve body, upper, 2 ports GC .....	884-257960	884-35795	Contact Alfa Laval	884-26875	884-29450
	1	Valve body, upper, 2 ports W .....	31353-0053-6	31353-0054-6	31353-0055-6	31353-0056-6	31353-0058-6
11Δ	1	Valve body seal ring, EPDM (standard) ..	31353-0128-1	31353-0128-1	31353-0128-1	31353-0205-1	31353-0205-1
	1	Valve body seal ring, NBR .....	31353-0128-2	31353-0128-2	31353-0128-2	31353-0205-2	31353-0205-2
	1	Valve body seal ring, FPM .....	31353-0128-3	31353-0128-3	31353-0128-3	31353-0205-3	31353-0205-3
	1	Valve body packing, PTFE .....	31353-0451-1	31353-0451-1	31353-0451-1	31353-0451-2	31353-0451-2
12	1	Valve body, lower, 2 ports GC .....	31353-0029-7	31353-0030-7	31353-0031-7	31353-0032-7	31353-0066-7
	1	Valve body, lower, 2 ports W .....	31353-0375-1	31353-0376-1	31353-0380-1	31353-0381-1	31353-0026-1
	1	Valve body, lower, 3 ports GC .....	884-253260	884-253260	31353-0039-7	31353-0040-7	884-26875
	1	Valve body, lower, 3 ports W .....	31353-0375-6	31353-0376-6	31353-0380-6	31353-0381-6	31353-0026-6
<b>Valve Body (polished)</b>							
10	1	Valve body, upper, 1 port W .....	31353-1105-1	31353-1106-1	31353-1107-1	31353-1108-1	31353-1109-1
	1	Valve body, upper, 2 ports GC .....	31353-103310	31353-1033-2	31353-0070-8	884-25209	31353-1033-5
	1	Valve body, upper, 2 ports W .....	31353-1105-2	31353-1106-2	31353-1107-2	31353-1108-2	31353-1109-2
11Δ	1	Valve body seal ring, EPDM (standard) ..	31353-0128-1	31353-0128-1	31353-0128-1	31353-0205-1	31353-0205-1
	1	Valve body seal ring, NBR .....	31353-0128-2	31353-0128-2	31353-0128-2	31353-0205-2	31353-0205-2
	1	Valve body seal ring, FPM .....	31353-0128-3	31353-0128-3	31353-0128-3	31353-0205-3	31353-0205-3
	1	Valve body packing, PTFE .....	31353-0451-1	31353-0451-1	31353-0451-1	31353-0451-2	31353-0451-2
12	1	Valve body, lower, 2 ports GC .....	31353-103010	31353-1030-2	31353-1030-3	31353-1030-4	31353-1030-5
	1	Valve body, lower, 2 ports W .....	31353-1100-1	31353-1101-1	31353-1102-1	31353-1103-1	31353-1104-1
	1	Valve body, lower, 3 ports GC .....	31353-1031-1	31353-1031-2	31353-1031-3	31353-1031-4	31353-1031-5
	1	Valve body, lower, 3 ports W .....	31353-1100-2	31353-1101-2	31353-1102-2	31353-1103-3	31353-1104-2

## Recommended Spare Parts: Service kit



**CSI**

CONTACT CSI FOR MORE INFORMATION | CSIDESIGNS.COM | SALES@CSIDESIGNS.COM | 417.831.1411

## Valve Parts (continued)

Pos.	Qty.	Description	1.5-inch Part No.	2-inch Part No.	2.5-inch Part No.	3-inch Part No.	4-inch Part No.
<b>Valve Plug</b>							
	1	Plug, double, complete EPDM (standard) .....	31353-0335-1	31353-0336-1	31353-0337-1	31353-0338-1	31353-0339-1
	1	Plug, double, complete NBR .....	31353-0335-2	31353-0336-2	31353-0337-2	31353-0338-2	31353-0339-2
	1	Plug, double, complete FPM .....	31353-0335-3	31353-0336-3	31353-0337-3	31353-0338-3	31353-0339-3
13	1	Stem .....	31353-0349-1	31353-0349-2	31353-0349-3	31353-0350-1	31353-1008-5
14Δ	1	Packing, upper, EPDM (standard) .....	31353-0321-1	31353-0321-1	31353-0323-1	31353-0324-1	31353-0325-1
	1	Packing, upper, NBR .....	31353-0321-2	31353-0321-2	31353-0323-2	31353-0324-2	31353-0325-2
	1	Packing, upper, FPM .....	31353-0321-3	31353-0321-3	31353-0323-3	31353-0324-3	31353-0325-3
	1	Packing, upper, PTFE .....	31353-1212-1	31353-1212-1	31353-1216-1	31353-1214-1	31353-1215-1
15	1	Middle piece .....	31353-0363-1	31353-0364-1	31353-0365-1	31353-0366-1	31353-0367-1
16Δ	1	Packing, lower, EPDM (standard) .....	31353-0320-1	31353-0321-1	31353-0322-1	31353-0324-1	31353-0325-1
	1	Packing, lower, NBR .....	31353-0320-2	31353-0321-2	31353-0322-2	31353-0324-2	31353-0325-2
	1	Packing, lower, FPM .....	31353-0320-3	31353-0321-3	31353-0322-3	31353-0324-3	31353-0325-3
	1	Packing, lower, PTFE .....	31353-1211-1	31353-1212-1	31353-1213-1	31353-1214-1	31353-1215-1
17	1	Washer .....	31353-1010-1	31353-1010-2	31353-1010-3	31353-10104	31353-1010-5
18Δ	1	O-ring, EPDM (standard) .....	990034-01	990034-01	990034-01	990034-01	990034-01
	1	O-ring, NBR .....	223404-21	223404-21	223404-21	223404-21	223404-21
	1	O-ring, FPM .....	223404-35	223404-35	223404-35	223404-35	223404-35
	1	Seal-ring, PTFE .....	9612-4330-01	9612-4330-01	9612-4330-01	9612-4330-01	9612-4330-01
19	1	Screw .....	31353-1011-1	31353-1011-1	31353-1011-1	31353-1011-1	31353-1011-1
Δ	1	<b>Service kit for valve, EPDM .....</b>	<b>9611-92-0025</b>	<b>9611-92-0028</b>	<b>9611-92-0031</b>	<b>9611-92-0034</b>	<b>9611-92-0037</b>
Δ	1	<b>Service kit for valve, NBR .....</b>	<b>9611-92-0026</b>	<b>9611-92-0029</b>	<b>9611-92-0032</b>	<b>9611-92-0035</b>	<b>9611-92-0038</b>
Δ	1	<b>Service kit for valve, FPM .....</b>	<b>9611-92-0027</b>	<b>9611-92-0030</b>	<b>9611-92-0033</b>	<b>9611-92-0036</b>	<b>9611-92-0039</b>

Parts marked with Δ are included in the valve service kits.

## Alternative for Stem Seal

### Stem Seal

8	1	Lip seal kit, EPDM (standard) .....	9611-92-0078	9611-92-0078	9611-92-0078	9611-92-0142	9611-92-0142
	1	Lip seal kit, NBR .....	9611-92-0079	9611-92-0079	9611-92-0079	9611-92-0143	9611-92-0143
	1	Lip seal kit, FPM .....	9611-92-0080	9611-92-0080	9611-92-0080	9611-92-0144	9611-92-0144
a●	1	Lip seal, EPDM (standard) .....	9612-2806-01	9612-2806-01	9612-2806-01	9612-3088-01	9612-3088-01
	1	Lip seal, NBR .....	9612-2806-02	9612-2806-02	9612-2806-02	9612-3088-02	9612-3088-02
	1	Lip seal, FPM .....	9612-2806-03	9612-2806-03	9612-2806-03	9612-3088-03	9612-3088-03
b	1	Plate .....	9612-2805-01	9612-2805-01	9612-2805-01	9612-3087-01	9612-3087-01
c●	1	Seal ring, EPDM (standard) .....	31353-0128-1	31353-0128-1	31353-0128-1	31353-0205-1	31353-0205-1
	1	Seal ring, NBR .....	31353-0128-2	31353-0128-2	31353-0128-2	31353-0205-2	31353-0205-2
	1	Seal ring, FPM .....	31353-0128-3	31353-0128-3	31353-0128-3	31353-0205-3	31353-0205-3
<b>FEP Seal</b>							
8 d	1	Washer .....	31353-0452-1	31353-0452-1	31353-0452-1	31353-0452-2	31353-0452-2
e●	1	O-ring FEP/Silicone .....	9611-99-2909	9611-99-2909	9611-99-2909	9611-99-2910	9611-99-2910
f	1	Holder .....	31353-0453-1	31353-0453-1	31353-0453-1	31353-0454-1	31353-0454-1
g●	1	Valve body packing .....	31353-0451-1	31353-0451-1	31353-0451-1	31353-0451-2	31353-0451-2
●	1	<b>Service kit for alternative stem seal, EPDM ...</b>	<b>9611-92-0471</b>	<b>9611-92-0475</b>	<b>9611-92-0479</b>	<b>9611-92-0483</b>	<b>9611-92-0491</b>
●	1	<b>Service kit for alternative stem seal, NBR .....</b>	<b>9611-92-0472</b>	<b>9611-92-0476</b>	<b>9611-92-0480</b>	<b>9611-92-0484</b>	<b>9611-92-0492</b>
●	1	<b>Service kit for alternative stem seal, FPM .....</b>	<b>9611-92-0473</b>	<b>9611-92-0477</b>	<b>9611-92-0481</b>	<b>9611-92-0485</b>	<b>9611-92-0493</b>
●	1	<b>Service kit for alternative stem seal, FEP .....</b>	<b>9611-92-0474</b>	<b>9611-92-0478</b>	<b>9611-92-0482</b>	<b>9611-92-0486</b>	<b>9611-92-0494</b>

Parts marked with ● are included in the alternative stem seal service kits.

## Recommended Spare Parts: Service kit

