

INSTRUMENT TEES



MONITOR YOUR PROCESS WITH COMPLETE DRAINABILITY

CONNECTIONS

- Tri-Clamp® or butt weld

MATERIALS

- 316L, AL-6XN®, or Hastelloy® C-22®
- MTR shipped with every order

FINISH OPTIONS

- BPE SF1 (PL) or BPE SF4 (PM)

APPLICATIONS

- Installation of measuring and monitoring instruments
- Designed for use in the pharmaceutical industry

FEATURES

- ASME BPE compliant
- Port bowl design allows for full drainability in both horizontal and vertical positions
- Minimizes dead space

MADE IN
USA

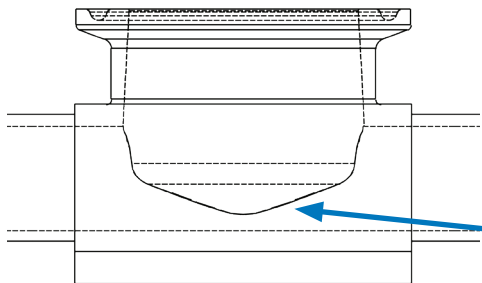


INSTRUMENT TEES

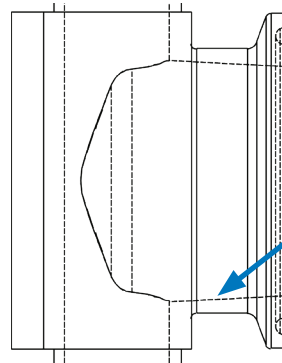
DRAINABILITY & DIMENSIONS

DRAINABILITY

Purposefully designed port bowl promotes drainability regardless of horizontal or vertical installation



Curved floor of port bowl enhances drainability in horizontal position



Sloped port bowl sides allow for drainability when installed in a vertical position

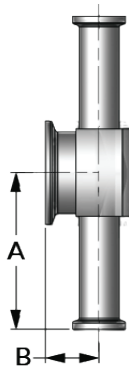
TRI-CLAMP® INSTRUMENT TEE

B7IMPS-SIZE-MATERIAL-FINISH

Size	A	B
1/2 X 3/4	2.500	0.875
1/2 X 1	3.000	0.875
1/2 X 1-1/2	3.000	0.875
1/2 X 2	3.250	1.000
3/4 X 1	3.000	1.000
3/4 X 1-1/2	3.000	1.000
3/4 X 2	3.250	1.125
1 X 1-1/2	3.000	1.125
1 X 2	3.250	1.250
1-1/2 X 2	3.250	1.500

2019 BPE DT-4.1.2-11 | 2009 BPE DT-29

ALL DIMENSIONS ARE SHOWN IN INCHES.
AL-6XN® AND C-22® AVAILABLE IN BPE SF5 (PO) FINISH.
ADDITIONAL DIMENSIONS AVAILABLE UPON REQUEST.



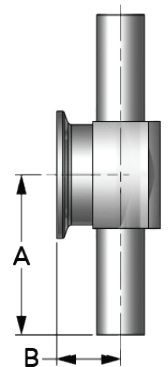
BUTT WELD INSTRUMENT TEE

B7IWWMS-SIZE-MATERIAL-FINISH

Size	A	B
1/2 X 3/4	2.000	0.875
1/2 X 1	2.500	0.875
1/2 X 1-1/2	2.500	0.875
1/2 X 2	2.750	1.000
3/4 X 1	2.500	1.000
3/4 X 1-1/2	2.500	1.000
3/4 X 2	2.750	1.125
1 X 1-1/2	2.500	1.125
1 X 2	2.750	1.250
1-1/2 X 2	2.750	1.500

2019 BPE DT-4.1.2-10 | 2009 BPE DT-28

ALL DIMENSIONS ARE SHOWN IN INCHES.
AL-6XN® & C-22® AVAILABLE IN BPE SF5 (PO) FINISH.
ADDITIONAL DIMENSIONS AVAILABLE UPON REQUEST.



CSIDESIGNS.COM | +1.417.831.1411 | SALES@CSIDESIGNS.COM
SPRINGFIELD, MO | GRAND PRAIRIE, TX | DURHAM, NC | FRESNO, CA

