

Models: 8500, 8501, 8513, 8514, 8500BL, 8501BL, 8513BL, 8514BL, 8540, 8541, 8550, 8551, 8540BL, 8541BL, 8550BL & 8551BL



Batch Control System - Air

See Figure 5

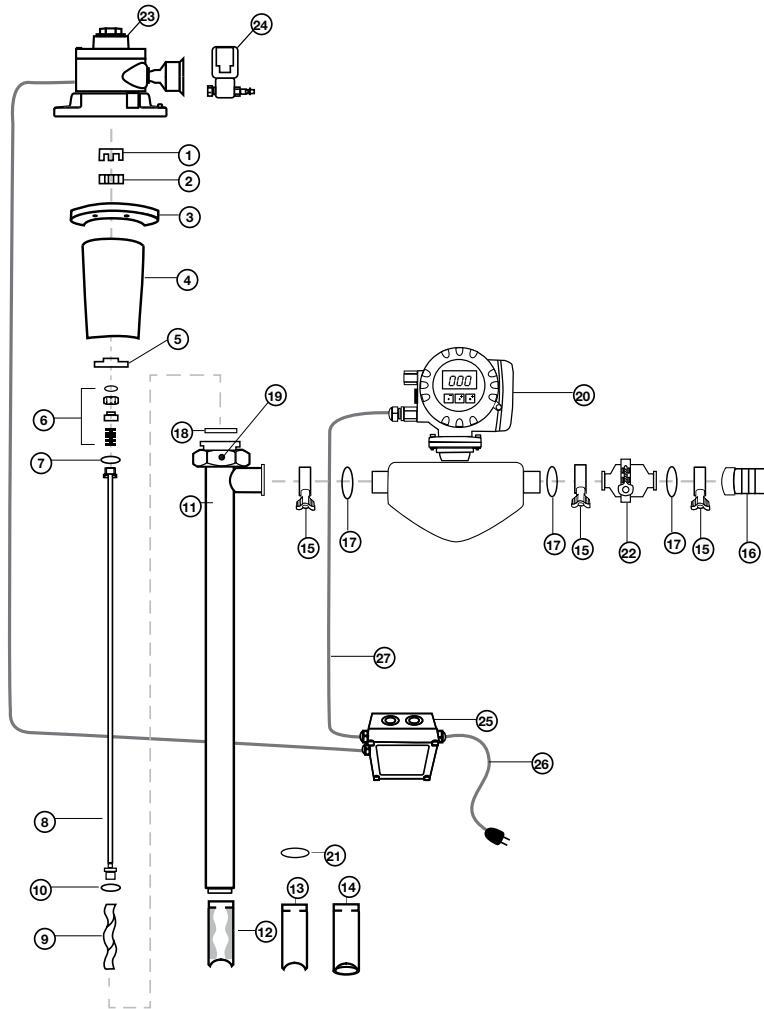


Figure 5 – Ultra Mass Batch Control System – Air

Ref #	Description	P/N for SP-800DD
1	Motor Coupling , 14 mm	744
2	Coupling Insert	745
3	Motor Mount Flange, Aluminum	760
4	Bearing Housing Assembly, Aluminum	759
5	Mechanical Seal Bushing, SS316	702
6	Mechanical Seal, SIC	703
7	Gasket, PTFE	735
8	Drive Shaft, SS316	
	SP-1851-39	705
	SP-752-39,	706
9	Rotor, SS316	
	Size 752	709
	Size 1851	710
10	Gasket, PTFE	731
11	Outer Tube Assembly, SS316	
	SP-1851-39	801
	SP-752-39,	802
12	Stator	
	Size 752	823
	Size 1851	824
13	Stator Tube, SS316	
	Size 752	875
	Size 1851	876
14	Stator for Bagliners, SS316	
	Size 752	875BL
	Size 1851	876BL
15	Tri-Clamp®, SS316	833
16	Hose Barb, SS316, 1.50" (38 mm)	835
17	O-Ring, Buna	836
18	Gasket, PTFE	738
19	Set Screw, SS316	757
20	Batch Control Meter	83E25AFTA-AAAA
21	Ring, SS316	0016
22	Check Valve, SS316	384510V
23	Air Motor, 2 HP (1,5 KW)	SP-A4FP
24	Solenoid Valve Kit, SS316	
	110-120V	0031SS
	220-240V	0031SS-2
25	Relay Box	US51G08
26	Relay Box Power Cord	
	110-120V	8362
	220-240V	8710
27	Power Cord, Meter to Relay Box	113443

