

**Ultra Mag Models: 8300, 8301, 8313, 8314, 8300BL, 8301BL, 8313BL, 8314BL, 8340, 8341, 8350, 8351, 8340BL, 8341BL, 8350BL & 8351BL**

**Ultra Mag Spare Parts Lists**

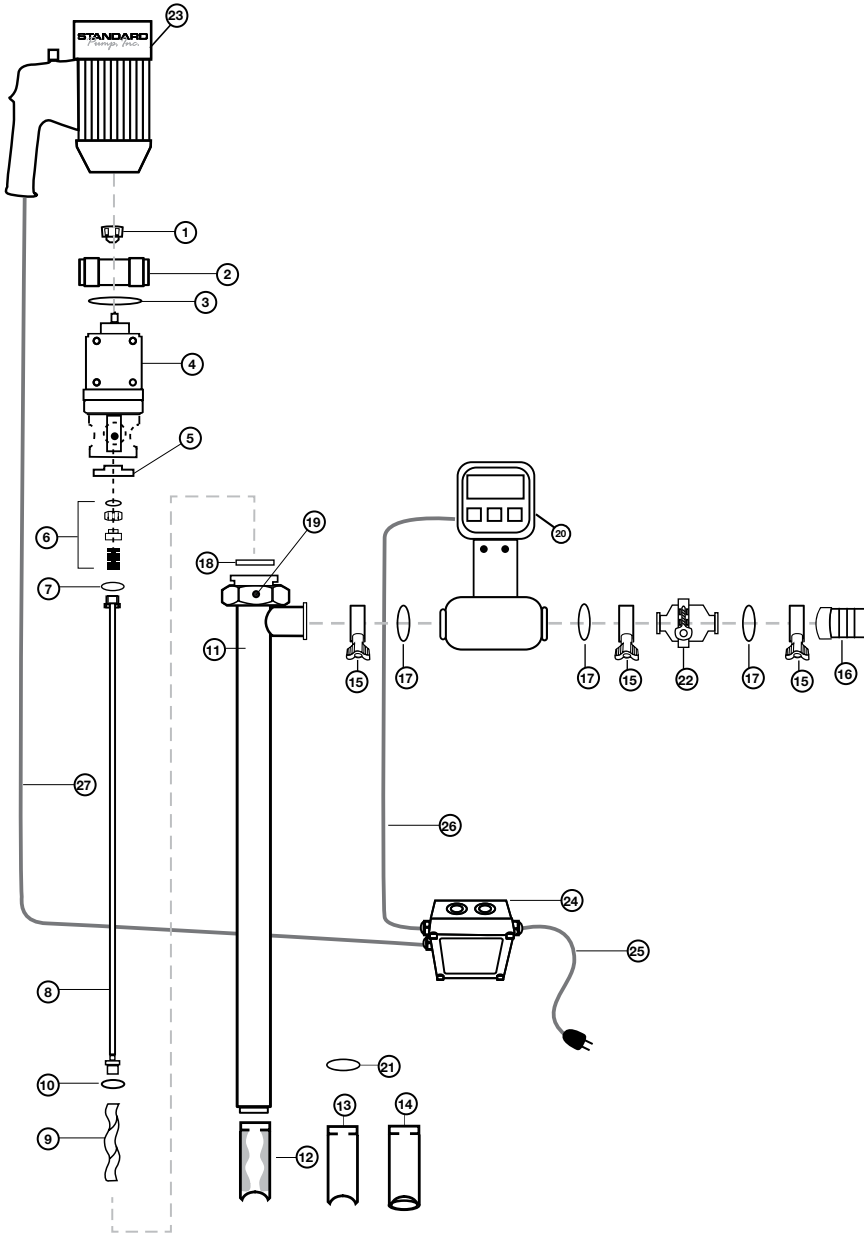


Figure 3 – Ultra Mag Batch Control System – Electric

**Batch Control System - Electric**

See Figure 3

Ref #	Description	Part Number
1	Pump Coupling	1004
2	Connection Nut, SS316	8842
3	Snap Ring, SS316	8208
4	Gear Reduction Unit, SS316	779
5	Mechanical Seal Bushing, SS316	702
6	Mechanical Seal, SIC	703
7	Gasket, PTFE	735
8	Drive Shaft, SS316	
	SP-1851-39	705
	SP-752-39	706
9	Rotor, SS316	
	Size 752	709
	Size 1851	710
10	Gasket, PTFE	731
11	Outer Tube Assembly, SS316	
	SP-1851-39	801
	SP-752-39	802
12	Stator	
	PTFE (Stator Insert Only)	
	Size 752	823
	Size 1851	824
13	Stator Tube, SS316	
	Size 752	875
	Size 1851	876
14	Stator for Bagliners, SS316	
	Size 752	875BL
	Size 1851	876BL
15	Tri-Clamp®, SS316	833
16	Hose Barb, SS316, 1.50" (38 mm)	835
17	O-Ring, Buna	836
18	Gasket, PTFE	738
19	Set Screw, SS316	757
20	Batch Control Meter	800us51g47
21	Ring, SS316	0016
22	Check Valve, SS316	384510V
23	Drum Pump Motor, TEFC	
	110-120V	SP-ENC-V
	220-240V	SP-ENC-2-V
24	Relay Box	US51G09
25	Relay Box Power Cord	
	110-120V	8362
	220-240V	8710
26	Power Cord, Meter to Relay Box	113443
27	Power Cord, Motor to Relay Box	
	110-120V	8363
	220-240V	8711

