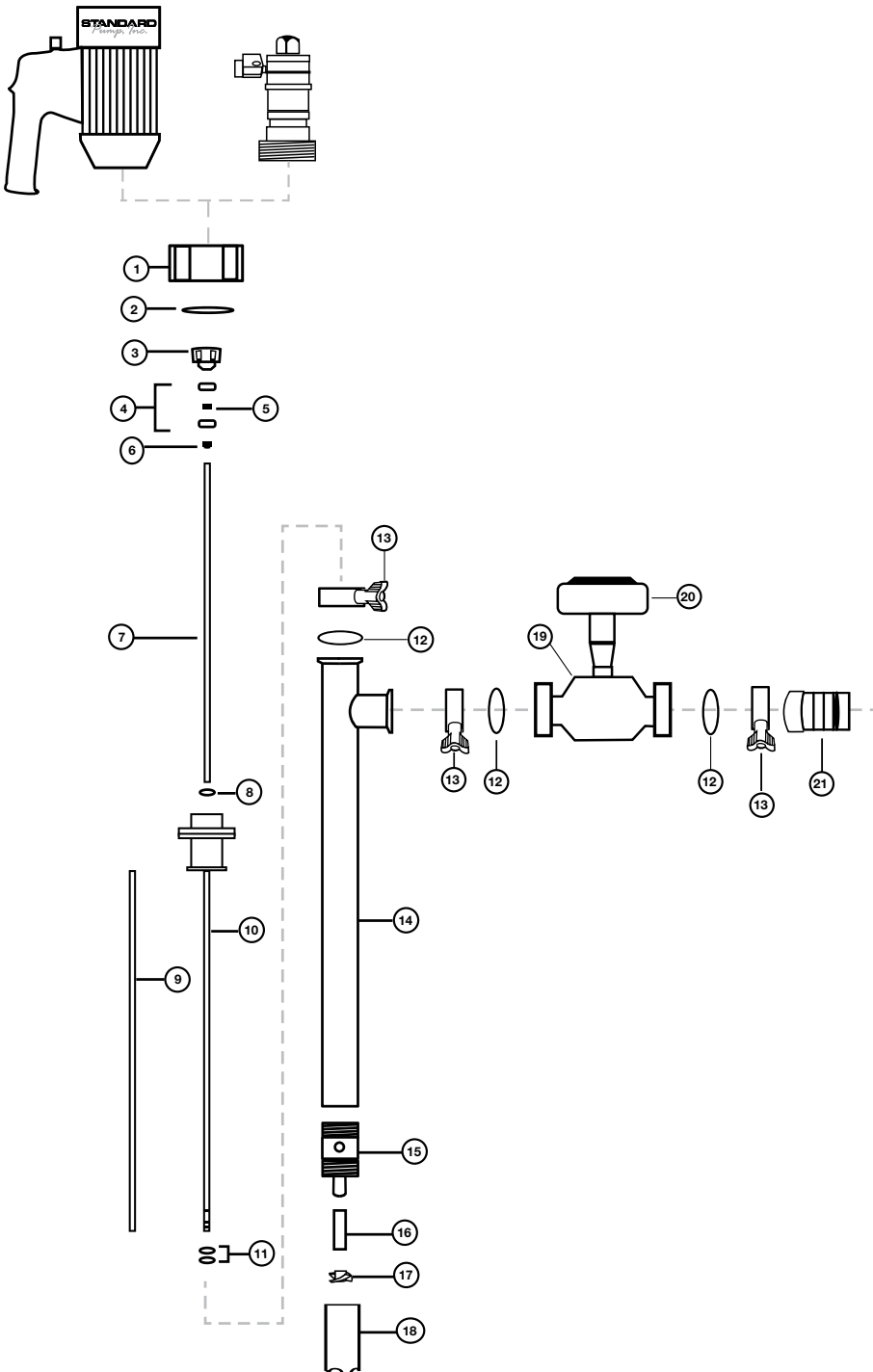


**Flow Meter System Models: 8870, 8871, 8873, 8874, 8872 & 8875**

**Flow Meter System Spare Parts Lists**



**Flow Meter System**

See Figure 10

Ref #	Description	Part Number
1	Connection Nut, SS316	8842
2	Snap Ring, SS316	8208
3	Pump Coupling, Nylon	1004
4	Bearing, SS410C, Food Grade Grease (2 Required)	8838-2
5	Bearing Spacer, SS316	8838-4
6	Secondary Seal, PTFE	8803
7	Drive Shaft, SS316	
	39" (1000 mm)	8806
	47" (1200 mm)	8807
8	O-Ring, Buna	8830
9	Guide Sleeve, PTFE	
	39" (1000 mm) /47" (1200 mm)	8811
10	Inner Tube Assembly, SS316	
	39" (1000 mm)	8819
	47" (1200 mm)	8820
11	O-Ring, Buna, (2 Required)	8823
12	O-Ring, Buna	836
13	Tri-Clamp, SS316	833
14	Outer Tube Assembly, SS316	
	39" (1000 mm)	8814
	47" (1200 mm)	8815
15	Pump Housing, SS316	8824
16	Bushing, PTFE	8825
17	Impeller, High Volume, SS316 (SP-8800)	8827
18	Pump Foot, High Volume, SS316 (SP-8800)	8826
19	Turbine Meter	HM150FF00
20	Control Module	HRT1000
21	Hose Barb	
	1" (25 mm)	8833
22	Motor	
	TEFC, 110-120V	SP-ENC-V
	TEFC, 220-240V	SP-ENC-2-V
	Air Motor, 1/2 HP (370 W)	SP-A1

Figure 10 – Flow Meter System

