



# Tote Batching & Handling Systems

**Reduce product loss** with lower deck height, better drainability, and automatic level monitoring.

**Improved safety** with stable support and easy tote loading and removal.

**Hygienic design** makes cleaning the stainless steel construction easy and efficient.

**Works with** a variety of tote sizes.

**Various pumps** and configurations are available for specific needs.

**Automated tilting** is available.

MTRs are available upon request.

CSI's automated batching and unloading systems take the mess—and loss—out of using totes

 **800.654.5635**

 **[csidesigns.com](http://csidesigns.com)**



**CSI**

2700 N Partnership Blvd  
Springfield, MO 65803

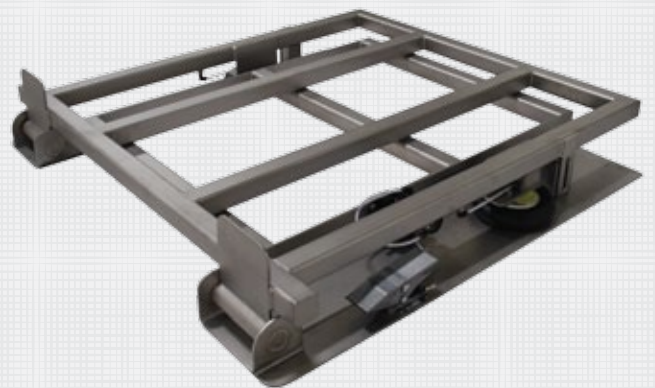
# Tote Batching & Handling Systems

## Options

- Fully automated batch or continuous ingredient delivery
- Tote loading, unloading, or both
- Manual, semi-, or fully-automated
- Various product-contact surface materials & finishes
- Reservoir capacity of up to 45 gallons
- Level indication, metering, or weighing
- Controls integration options
- Installation available
- Drum unloading available
- Mobility and CIP options
- Tote type and configuration options



- Automated tilter available as a standalone, or integrated into a tote batching system



**CSI**

2700 N Partnership Blvd  
Springfield, MO 65803

 [csidesigns.com](http://csidesigns.com)

 **800.654.5635**